



# Monkey Business

Mrs. Edgar

Fifth Grade

Volume 28, April 27 2009



## Hobull

### Four Questions

1. What do we want our students to learn?
2. How will we know they are learning the material?
3. What do we do with the students who are not getting the material?
4. What do we do with the students who already know the material?

This week I brought in a new class pet, a cockatiel. Your son or daughter may have discussed Hobull joining our class but I wanted to officially welcome him.

Some of the students have asked if they can bring things in for Hobull so I am including a list of items that are suitable:

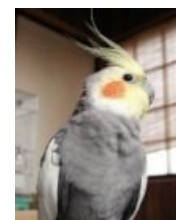
### April 2009

Monday	Tuesday	Wednesday	Thursday	Friday
20	21	22 Social Studies MAT assessment	23 Return Summer School Forms	24 <b>ODM BBQ</b> on Saturday Please join us
27	28 M.S. visits BF	29	30 Birthday with Principal Bowling Fieldtrip	May 1 Botanical Gardens Fieldtrip
4	5	6 Mrs. Edgar out of building for PD	7	8 Stevens Farm
11	12	13 Field Day	14	15 Young Author's Conference
18 Career Day	19	20 End of the Year Celebration	21 Last Day of School and Awards Ceremony , 9:45-11:00 a.m.	22

- Cockatiel specific food or treats (he loves Millet Spray)
- Cockatiel toys (they love enrichment activities as well in the form of puzzle toys, but please no tiny bells)
- Suitable Table foods: papaya, plums, watermelon, kale, pears, peaches, cooked pasta, dried fruit, broccoli, grape nuts, Cheerios, Rice Krispies, mango, carrot tops, kiwi, mango, oranges, corn, spinach, cooked dry beans, unsalted crackers and popcorn, and shredded wheat.

To find out more about cockatiels, or for a better list, please visit the following website:

<http://www.cockatielcottage.net/index.html>



## Communication Arts

This week we started reading *The Breadwinner* by Deborah Ellis. We learned that the Taliban was not the first group of people to invade Afghanistan and we made a connection with the Persian invasion to the movie *300*. We will continue to learn about Parvana and the obstacles her family faces in order to survive in the face of adversity.

4 Questions (4Q): Journal prompts, Education City activities, hands on activities and learning games.

Next week's essential question: How has the Taliban affected Afghanistan? How does this story connect to our own current events?

**Rtl:** On Mondays, I meet with a small group of students to work on fluency skills and DIBELS benchmark assessments. On Wednesday mornings I meet with a small group of students to work on comprehension skills.

## Science/Social Studies

This week we read about the industries and restrictions during World War II. They watched a video about victory gardens, rations, and war bonds. They also created an advertisement about rations in class.

This week we started exploring the solar system, starting with Mars. Students worked in their group to create a list of items they needed to take for their mission to Mars. Some wanted to take magic pencils so they could just have what they needed, but I explained it had to be real items and suitable for the trip.

Next week's essential question: What were the causes and effects of World War II? What are celestial bodies? What is the difference between planets and dwarf planets?

4Q: 2 (observations during collaborative learning) Q3 and Q4 (These projects are flexible to meet the learning needs of all students) and Education City.

## Math

This week we began our flight to Mars. Students worked in groups to prepare to be the first humans to Mars. They measured items to place in their shared cubicle using rulers and yardsticks. Then they created a scale drawing of their cubicle with all items properly placed and listed. They had some flexibility in creating their own scale but it had to be consistent in their group. I think they worked very well together and enjoyed this activity, which was simply review of earlier math skills.

4Q: Partner activities and observation of completed work and Education City activities.

Next week's essential questions: How would you spend \$1,000,000? Why are cost sheets or budgets beneficial? How do you accurately compute money?

**Rtl:** Small groups, Discovery Education Probes, and Education City.

**Weekend homework: Attend the ODM BBQ on Saturday, April 25 from 10:30-2:30 and earn \$100.00 of Star Bucks**